

PORTFOLIO

1. SAFETY RELIEF VALVES
2. BREATHER VALVES
3. SAMPLING BALL VALVES

Type 100

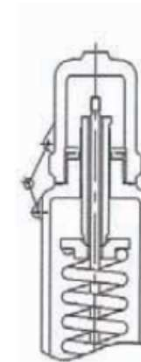


+ Fixed flanged safety valves

Industries:

- ✓ Chemical
- ✓ Energy
- ✓ In process

TYPE 110-130
TIGHT PLUG WITHOUT LEVER



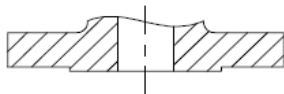
TYPE 120-140
TIGHT PLUG WITH LEVER



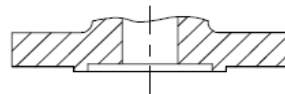
MAIN CHARACTERISTICS:

- Material: Carbon Steel, Stainless steel, Cast Iron
- Inlet: ND20(3/4") to ND150(6")
- Seat: metal/metal or soft seat (O'ring EPDM, FPM, FFKM depending of fluid and temperature or PTFE disc)
- Nozzle: semi-nozzle or full nozzle in Stainless Steel
- Set pressure: from 0.25 to 40 bar

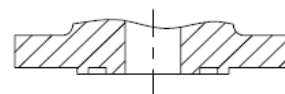
RAISED FACE CLASS 150/300
PN 16/40



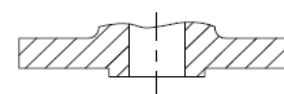
MALE FEMALE FACING



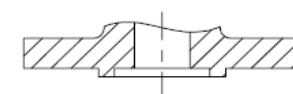
TONGUE GROOVE FACING



MALE FEMALE FACING



TONGUE GROOVE FACING



Type 300

H+ Flow



+ Safety valves according to API 520,
526, 527

Industries:

- ✓ Petrochemical
- ✓ Chemical
- ✓ Oil & Gas
- ✓ All API specified applications
where API is specified

MAIN CHARACTERISTICS:

- Material: Carbon Steel - Stainless Steel
- Conventional Safety - Balanced - With or without lever
- From ND 25 (1") to ND 150 (6")
- Orifices: D – R
- Connections: Class 150/300/300Light/600
- Blow down adjusting ring
- Optional soft seat (O'ring or PTFE disc)

Type 500



- + Safety valves range with different connections & options

MAIN CHARACTERISTICS:

- Material: Carbon steel, Stainless Steel, Bronze, Alloy
- ND08 (1/4") to ND50 (2")
- Balanced safety valves
- Plug: tight without lever, tight with lever, untight with lever

Seat:

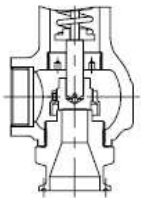
- Metal/Metal
- Soft seat (EPDM, PTFE, FPM, FFKM, Nitrile...)



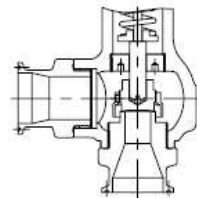
Set pressure:

- Carbon Steel : from 0,2bar to 80bars
- Stainless Steel : from 0,2bar to 400bars
- Bronze : from 0,2bar to 25bars
- Alloy : from 0,2bar to 360bars

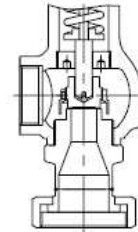
CLAMP CONNECTION



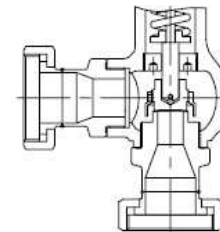
INLET AND OUTLET CLAMP CONNECTION



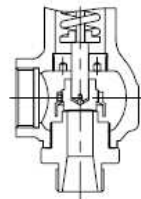
SMS CONNECTION



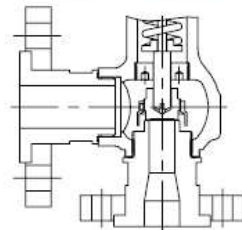
INLET AND OUTLET SMS CONNECTION



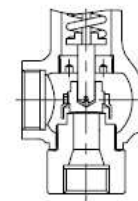
SCREWED / THREADED



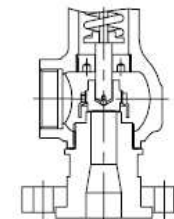
FLANGES / FLANGES



INLET AND OUTLET THREADED CONNECTION



FLANGES / THREADED



Type 700



- + Compact safety valves range to
- + thermal expansion / little flow

MAIN CHARACTERISTICS:

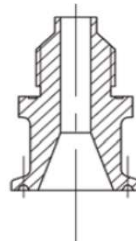
- Stainless Steel (316L)
- ND08 (1/4") to ND20 (3/4")
- Set Pressure: from 0,2bar to 12bars
- Tight plug, Untight plug + lifting ring



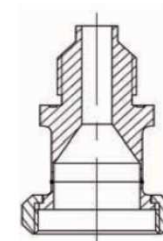
SCREWED CONNECTION



CLAMP CONNECTION



SMS CONNECTION



Type 600



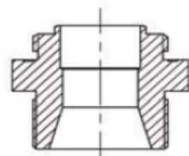
- + - Pressure
- + - Vacuum & Pressure
- Vacuum valves on low pressure with spring

MAIN CHARACTERISTICS:

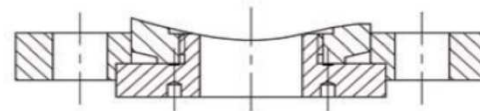
- Material : Stainless Steel (316L), Alloy
- ND20 (3/4") to ND150 (6")
- Metal/Metal Stainless Steel (316L)
- Soft seat (PTFE disc, O'ring FPM, EPDM, ...)



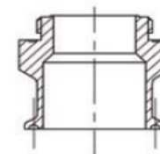
SCREWED CONNECTION



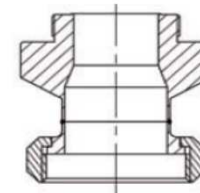
FLANGE CONNECTION



CLAMP CONNECTION



SMS CONNECTION



BREATHER VALVES

TYPE 101 (atmospheric outlet)

- Pressure / vacuum
- Body: Aluminum, WCB, CF8 (304), CF8M (316)
- Flanges: ANSI 150, PN 10
- Settings: between ± 2.5 mbar to ± 500 mbar

TYPE 111 :

- With pipe away, (same like Type 101)



PRESSURE RELIEF VALVES

TYPE 9 (atmospheric outlet)

- For low pressure
- Body: WCB, CF8 (304), CF8M (316)
- Flanges: ANSI 150, PN 10
- Settings: between +2.5 mbar to +500 mbar



TYPE 121 :

- With pipe away, (same like Type 9)



VACUUM RELIEF VALVES

TYPE 102

- For vacuum
- Body: WCB, CF8 (304), CF8M (316)
- Flanges: ANSI 150, PN 10
- Settings: between -2.5 mbar to -500 mbar



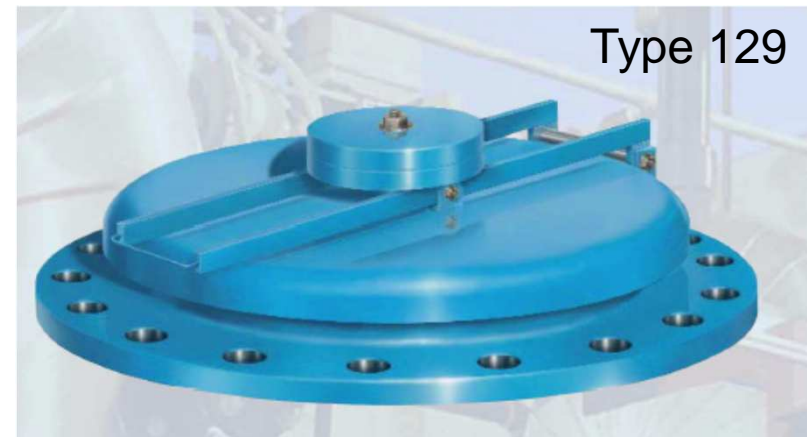
EMERGENCY VENT MANHOLE COVER

TYPE 129

For an easy access to tank and for assuring a large emergency relief opening in case of fire exposure.

Standard Materials :

- Body: Carbon Steel, AISI 304, AISI 316
- Cover: Carbon Steel, AISI 304, AISI 316
- Diaphragms: Synthetic rubber or PTFE
- Flanges: ANSI 150, PN 10, PN 16
- Settings: 16 mbar to 50 mbar
- Sizes: ND16 to ND24



SAMPLING BALL VALVES



- Material : Stainless steel 316L, Alloy C276, etc...
- Ball and stem : 316L or others
- O'ring : Viton[®], Chemraz[®], Kalrez[®], etc ...
- Seats, Inserts, Packing and Gasket : PTFE/PTFE or PTFE/PEEK
- Different sample capacity (25 ml, 50 ml, 100 ml)
- Different connections (flanged PN16, 150 lbs, 300 lbs)
- Dimension: from 1' to 8'

HOW IT WORKS

