

ISO 4126

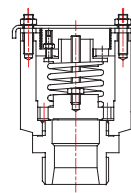


## Type 600

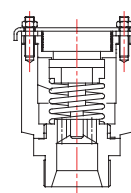


MATERIAL	TYPE	ND	PN
STAINLESS STEEL	600IRTBP	20 to 50	10
	600IR	20 to 50	
	602IR	25 to 100	
	606IRTBP	20 to 50	
	607IRTBP	25 to 50	
	610IRTBP	20 to 50	
	610IR	20 to 50	
	611IR	25 to 100	
	612IR	25 to 100	
	650IR	20 to 50	
	652IR	25 to 100	

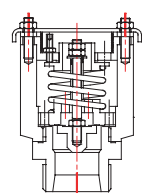
TYPE 600  
PRESSURE



TYPE 610  
VACUUM

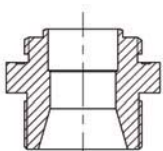


TYPE 650  
PRESSURE/VACUUM

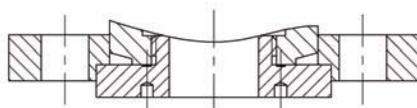


### Connection

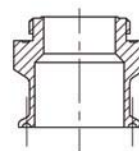
SCREWED CONNECTION



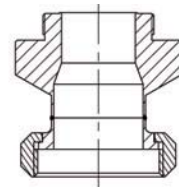
FLANGE CONNECTION



CLAMP CONNECTION



SMS CONNECTION

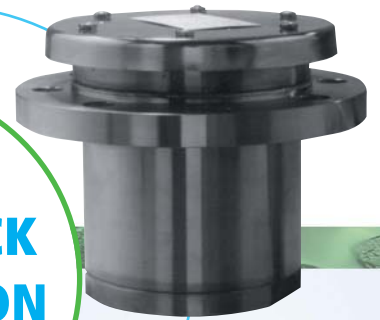


# Special Design



**CHEMICAL  
APPLICATION**

**TANK TRUCK  
APPLICATION**



**CLAMP**

## Order information

TYPE	PLUG	CONNECTION	MATIERE	PN CLASS	DN PN10 + BSP	CLASS 150 + NPT
6	0 - PRESSURE	0 - SCREWED BSP(NPT) / ATMOSPHERE 1 - FLANGE / FLANGE 2 - FLANGE / ATMOSPHERE 6 - SCREWED BSP(NPT) / SCREWED BSP(NPT) 7 - FLANGE / FLANGE 9 - CLAMP / ATMOSPHERE	I - STAINLESS STEEL  H - HASTELLOY	R - PN10  1 - CLASS 150	DN 08	01 - 1/4"
	1 - VACUUM	0 - SCREWED BSP(NPT) / ATMOSPHERE 1 - FLANGE / FLANGE 2 - FLANGE / ATMOSPHERE 6 - SCREWED BSP(NPT) / SCREWED BSP(NPT)			DN 10	02 - 3/8"
	2 - VACUUM	0 - CLAMP / ATMOSPHERE 2 - SMS / ATMOSPHERE			DN 15	03 - 1/2"
	5 - PRESSURE & VACUUM	0 - SCREWED BSP(NPT) / ATMOSPHERE 1 - FLANGE / FLANGE 2 - FLANGE / ATMOSPHERE			DN 20	04 - 3/4"
	6 - PRESSURE & VACUUM	0 - CLAMP / ATMOSPHERE			DN 25	10 - 1"
				DN 32	11 - 1 1/4"	
				DN 40	13 - 1 1/2"	
				DN 50	20 - 2"	
				DN 65	23 - 2 1/2"	
				DN 80	30 - 3"	
				DN 100	40 - 4"	