



P R E S S U R E
T E M P E R A T U R E
L E V E L
I N S T R U M E N T A T I O N
F L O W
A N A L Y T I C A L

Autoclaveable Pressure Transmitter

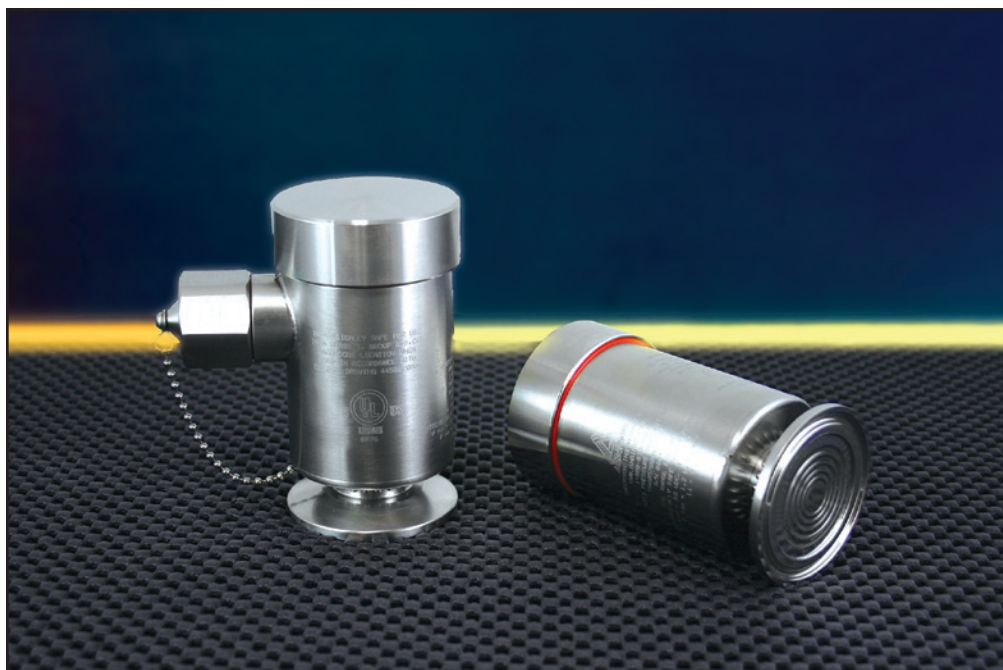
- *Compact low profile design*
- *Output remains stable through repeated autoclave cycles*
- *Rated NEMA 4X & 6P, IP67 & 69k*

Anderson's Autoclaveable HA Sanitary Pressure Transmitter is specifically designed for critical measurements in fractional size lines. Developed from the highly stable "Mini" HA Pressure Transmitter, the Autoclaveable HA takes the versatility of a small form factor transmitter to the next level by withstanding the stress of the autoclave environment. Its one-piece stainless steel package design incorporates a transducer and electronic circuitry to convert pressure and/or vacuum to a proportional 4-20 mA signal.

The product can be ordered with 1-1/2" Tri-Clamp® connection or our CPM fitting that eliminates hold-up volumes in process lines. All units are supplied factory calibrated to standard or custom ranges. For field maintenance, non-interactive zero, and span

adjustments, as well as easily accessible test points that greatly simplify calibration and validation. 316 "L" stainless steel wetted parts are electro-polished to an $R_a=8$. Finally, since it's an Anderson "Pharmaceutical Series" product, every transmitter includes calibration and material certificates and permanent tag at no charge.

Complete specifications and ordering information are available on the reverse. For more information please visit our Web Site at www.andinst.com, or contact your local Authorized Anderson Distributor.



Complete Product Ordering Matrix

HOUSING		HA										C		1		2						
6		Conduit Housing																				
RANGE/(AVAILABLE UNITS)																						
025	30"Hg/0	(M)																				
028	30"Hg/0/15 psig	(C)																				
029	30"Hg/0/30 psig	(C)																				
031	30"Hg/0/60 psig	(C)																				
032	30"Hg/0/100 psig	(C)																				
056	-1/0/4 BAR	(B)																				
057	0/2 BAR	(B, T)																				
060	0/6 BAR	(B)																				
061	0/10 BAR	(B, T)																				
066	0/30	(G, A, M)																				
068	0/50	(G, A, B)																				
069	0/60	(G, A, B)																				
071	0/100	(G, A)																				
073	0/150	(G, A)																				
077	0/300	(G, A)																				
081	0/500	(G)																				
192	0/4 BAR	(B, T)																				
217	-1/0/3 BAR	(B)																				
235	0/3 BAR	(B, T)																				
251	-1/0/1 BAR	(B)																				
286	-1/0/2.5 BAR	(B)																				
304	-1/0/7 BAR	(B)																				
ENGINEERING UNITS																						
G	PSIG																					
M	" Hg (inches mercury)																					
A	PSIA																					
B	BAR																					
C	Vacuum/Pressure (Hg & PSIG)																					
T	BAR (Absolute)																					
FITTING																						
004	1.5" Tri Clamp®																					
123	CPM*																					
AUTOCLAVEABLE OPTION																						
C																						

CABLE LENGTH	
00	Quick Disconnect Receptacle(QDR) w/no cable
01	QDR & Field Wireable Connector(FWC) w/no cable
05	QDR & FWC w/ 25' cable
10	QDR & FWC w/ 50' cable
15	QDR & FWC w/ 75' cable
20	QDR & FWC w/ 100' cable

FINISH	
2	Electropolished (R _a = 8)

DIAPHRAGM MATERIAL	
1	316L Stainless Steel

* Standard O-Ring material is EPDM USP Class VI
Silicon or Viton available as an option

3.31 WITH CAP
2.75 WITHOUT CAP
2.04
3.60
2.29

CABLE LENGTH

00	Quick Disconnect Receptacle(QDR) w/no cable
01	QDR & Field Wireable Connector(FWC) w/no cable
05	QDR & FWC w/ 25' cable
10	QDR & FWC w/ 50' cable
15	QDR & FWC w/ 75' cable
20	QDR & FWC w/ 100' cable

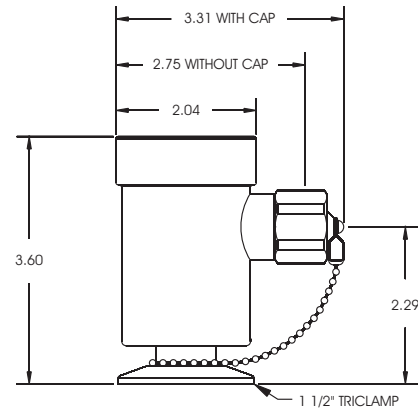
FINISH

2	Electropolished ($R_a = 8$)
---	-------------------------------

DIAPHRAGM MATERIAL

1	316L Stainless Steel
---	----------------------

* Standard O-Ring material is EPDM USP Class VI
Silicon or Viton available as an option



SHOWN WITH AUTOCLAVE CAP

Specifications

Excitation:	10-40 VDC (Absolute), 24 VDC	Ambient Temperature Limits:	-18°C to 49°C (0°F to 120°F)
	Nominal regulated or unregulated	Storage Temperature:	-40°C to 65°C (-40°F to 149°F)
Output:	4-20 mA DC, 2 wire with non-	Over-Range Rating:	2 times base range
	interrupting circuit verification test	Response Time:	200 uSec
points		Wetted Parts:	316L stainless steel electropolished (R_a max. = 8 microinches, .2 microns)
Loop Resistance:	0-700 ohms at 24 VDC	Housing Material:	304 stainless steel
Wiring Connection:	5pin M12 Quick Disconnect Receptacle	Zero and Span Adjustments:	± 10% of range
Recommended Cable:	22-24 AWG, foil shielded, and PVC coated. (3/16 - 1/4 OD insulation)	Mounting:	Direct connection
Accuracy:	± 0.4% of full scale	Electrical Ratings:	Intrinsically safe for use in Class 1, Div. 1, Groups A-D; CE
Repeatability:	± 0.2% of full scale		(EMC Industrial Locations)
Hysteresis:	± 0.10% of full scale	Compliant:	Designed and manufactured to sound engineering practices in accordance with Article 3.3 of the PED 97/23/EC
Linearity:	±0.10% of full scale	Standards:	NEMA 4X & 6P
Stability:	±0.15% of calibrated range for 6 months or 30 Autoclave cycles		IP67 & 69k
Effect of Temperature Change:	± 0.1 psig/5.5°C (10°F) typical		CSA B51-03
Max. Autoclave Temperature:	124°C (255°F) for 1 hour		CRN# CSA0F9754.5C
Process Temperature Limits:	-1°C to 149°C (30°F to 300°F) (Horizontal Mount recommended over 135°C (275°F))		