

# STERISAMPLE®



*...pure sampling*

### Sample port

The hypodermic sample port makes it possible to take samples of the product from a vessel in an aseptic manner without disrupting production. It is suitable for a wide range of processes/production lines within the pharmaceutical sector. Prior to sampling, the port is sterilized with alcohol and then sampling takes place by simply penetrating the special silicone membrane with a needle.

### Features

Easy to use. Easy to clean/sterilize. Flanged on to a standard TC-flange or the Steriflange. Adaptation to a syringe or to a vessel by flexible hose depending on the sample volume. Cost effective sampling system by using standard syringes. Autoclavable.

### Technical data

Product contact surfaces are finished to  $Ra < 0.5 \mu m$  or better.

Silicone diaphragm complies with FDA regulations.

Traceability-certificates according to EN 10204 (3.1B) are always supplied with Sterisample.

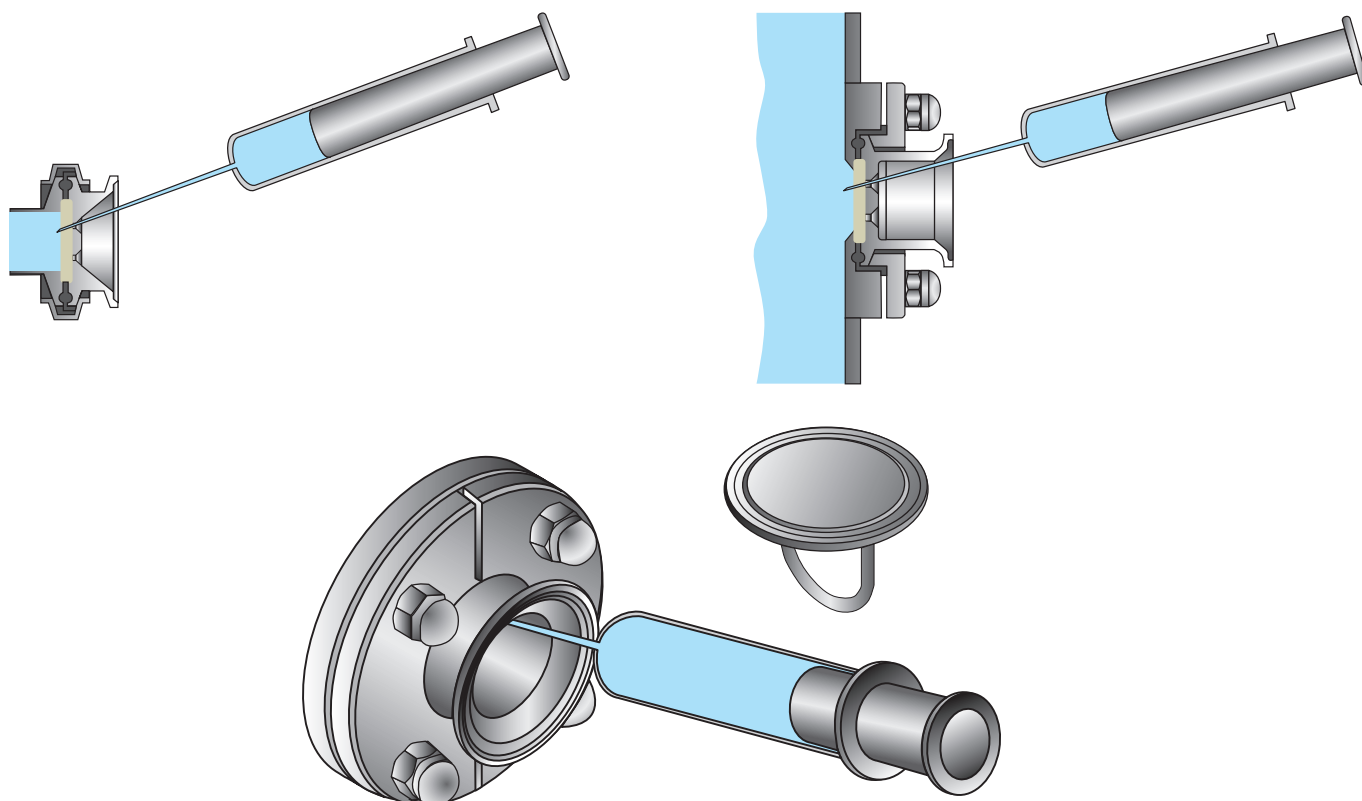
Manufactured of AISI 316L stainless steel.

### Applications

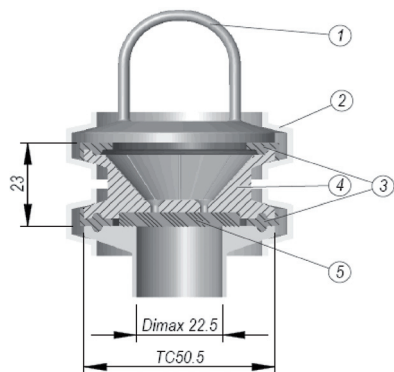
General Sampling, Cell Culture Sampling and High Purity sampling.

## Ways of taking samples from vessel wall

---



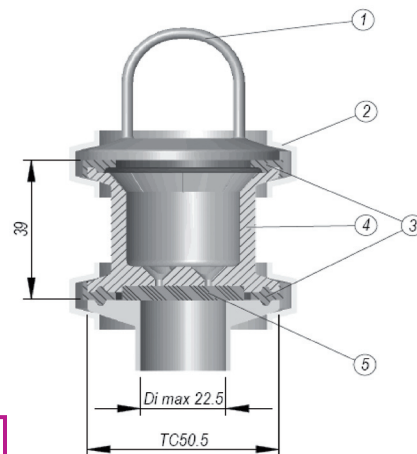
### Sterisample short, for standard TC-flange Connection



110336

6	1	Nut for TC clamp	110339
5	1	Membrane	110034
4	1	Sample port 50.5	110332
3	2	TC-gasket 50.5/38	110334
2	2	TC-clamp 50.5/38	110014
1	1	Blind endcap 50.5/38	110335
Item	Qty	Denomination	Part No

### Sterisample long, for Steriflange Connection

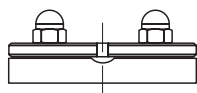


110337

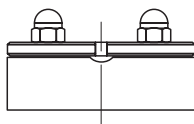
6	1	Nut for TC clamp	110339
5	1	Membrane	110034
4	1	Sample port 50.5	110333
3	2	TC-gasket 50.5/38	110334
2	1	TC-clamp 50.5/38	110014
1	1	Blind endcap 50.5/38	110335
Item	Qty	Denomination	Part No

### Recommended Steriflange for use with Sterisample

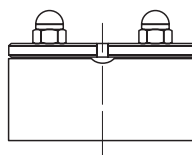
SF ASTM M-100/12



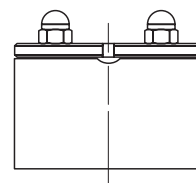
SF ASTM M-100/25



SF ASTM M-100/38



SF ASTM M-100/51



*Sterisample fits in the following clamp connection Steriflange ASTM M-100 (metric), and ASTM I-100 (inch), and can be supplied in the following four sizes, 12, 25, 38, and 51 mm.*



**STERIDOSE®** *...pure mixing*

**STERIDOSE SALES**

**Head Office:** Himmelsbodavägen 7  
P.O.Box 120 · SE-147 22 TUMBA · SWEDEN  
Phone: +46-8 449 99 00 · Fax: +46-8 449 99 90  
info@steridose.com · www.steridose.com

**Regional Office:** 5020 World Dairy Drive · Madison, WI 53718 · USA  
Phone: +1-608 229 5225 · Fax: +1-608 227 9599  
info@steridose.com · www.steridose.com

