

SANITARY SIGHT GLASS SWS

DESCRIPTION

The SWS sanitary sight glasses are designed to monitor liquid flow in any direction.

Sight glasses (or flow indicators) are usually employed to detect either the presence or absence of fluid flow, turbulence, colour, etc.

They are specially recommended for high purity applications.

MAIN FEATURES

Compact design.

Completely machined from barstock materials, no castings or forgings are used on the standard version.

Precision glass mounted without stress.

Excellent visualization.

STANDARD SURFACE FINISH

Internal wetted parts: $\leq 0,51$ micron Ra – SF1.

External : $\leq 0,76$ micron Ra – SF3.

Other surface conditions see IS PV20.00-Technical information.

Ultrasonic cleaning.

OPTIONS: Full view design.

USE: Water and other gases and liquids compatible with the construction.

AVAILABLE MODELS: SWS

SIZES: 1/2" to 4".

CONNECTIONS: Clamp ends or others on request.

PACKAGING: Assembling and packaging in a clean room certified according to ISO 14644-1. The product is end capped and sealed with recyclable thermo-shrinkable plastic film to avoid contamination.

INSTALLATION: In any position.

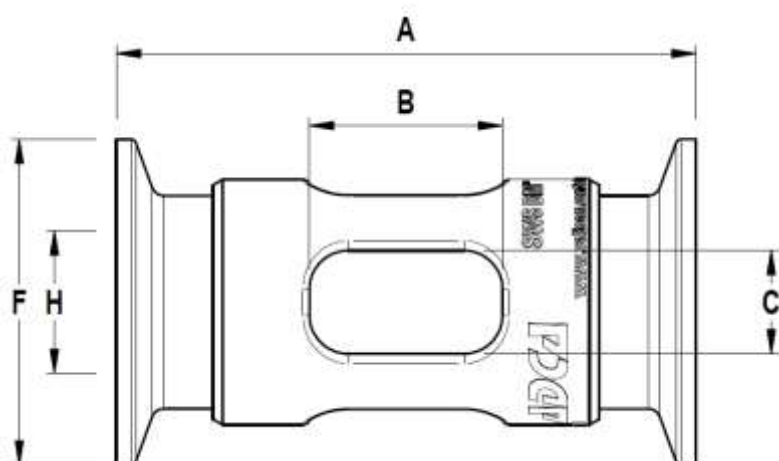


| CE MARKING - GROUP 2 (PED - European Directive) | |
|---|----------|
| Sizes | Category |
| 1/2" to 4" | SEP |

DIMENSIONS (mm) ASME BPE

| SIZE | A | B | C | Ø F | Ø H | Ps bar | * Ts °C | ** Ts °C | WGT. Kg |
|--------|-----|-----|----|-------|-------|-----------|------------|-------------|------------|
| 1/2" | 76 | 20 | 10 | 25 | 9,4 | 20 | 150 | 200 | 0,13 |
| 3/4" | 92 | 30 | 10 | 25 | 15,75 | 16 | 150 | 200 | 0,23 |
| 1" | 92 | 30 | 15 | 50,5 | 22,1 | 14 | 150 | 200 | 0,4 |
| 1 1/2" | 105 | 32 | 24 | 50,5 | 34,8 | 10 | 150 | 200 | 0,58 |
| 2" | 120 | 48 | 34 | 64 | 47,5 | 10 | 150 | 200 | 0,83 |
| 2 1/2" | 151 | 55 | 40 | 77,4 | 60,2 | 9 | 150 | 200 | 1,35 |
| 3" | 175 | 90 | 50 | 90,9 | 72,9 | 9 | 150 | 200 | 2,53 |
| 4" | 200 | 110 | 60 | 118,9 | 97,4 | 8 | 150 | 200 | 3,81 |

* EPDM seals; ** FEP seals.


MATERIALS

| POS. | DESIGNATION | MATERIAL |
|------|-----------------|--------------------|
| 1 | Valve body | AISI316L / 1.4406 |
| 2 | * Glass | Borosilicate |
| 3 | Connection ends | AISI 316L / 1.4404 |
| 4 | * O-ring | EPDM ** |
| 5 | * O-ring | EPDM ** |

* Available spare parts.

** Available on request: FEP (PTFE coated silicone) and others.

Remarks: FDA/USP Class VI seals certificate on request

All products have a serial number. In case of non-standard

valves this number must be supplied if spare parts are ordered.

